

**2025-2026**  
NEW COLLECTION

  
**BerlingerHaus®**  
PROFESSIONAL PRECISION



*Matte Green*  
collection

# Matte Green collection



Our pioneering design products were created with a combination of materials and colors from the world's leading furniture and interior design trends, including the features of minimalist style, combined with the natural materials of the Earth to achieve an appearance of elegance. Beyond function the wide range of products grants an opportunity of self-expression through our collections creating an environment of harmony and unity in your home.



# REGISTERED DESIGNS

---



This practical and elegant piece is the perfect addition to your collection! We dedicated countless hours to achieving an ideal balance of clean simplicity, creativity, innovation, and above all—functionality.

## Cookware Handle and knob design

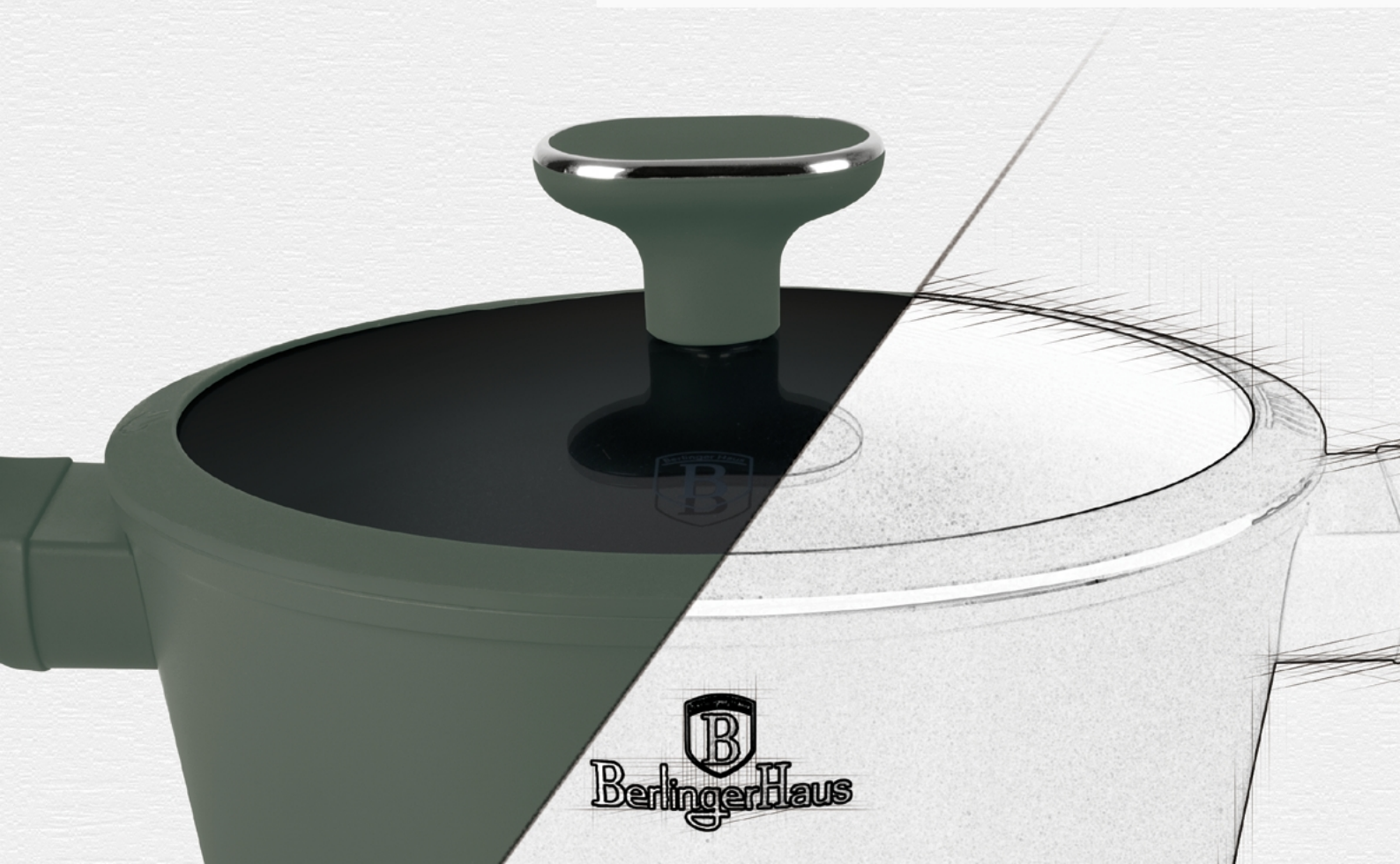
Comfort was our priority, with a clear focus on our main goal: a bakelite handle and knob with a smooth finish and durable material that makes cooking as effortless as it should always be.



*Brand new technologies from BerlingerHaus . . .*



We spent countless hours to create the perfect balance of clean simplicity, creativity, innovation, and most importantly – practicality. Comfort was of great importance and our main aim was always in the back of our minds: a bakelite handle and knob with a smooth coating and material that keeps cooking as simple as it always should be.



  
**BerlingerHaus**

# COOKWARES



INDUCTION



GAS



ELECTRIC



VITROCERAMIC



HALOGEN

## SAUCE PAN 16CM



**BH-8154**

Ø16x7cm 1,2L

## SAUCE PAN WITH LID 16CM



**BH-8155**

Ø16x7cm 1,2L

## MINI PAN 16CM



**BH-8205**

Ø16cm

## FRYPAN 20CM



**BH-8150**

Ø20x4,5cm 1L

## FRYPAN 24CM



**BH-8151**

Ø24x4,8cm 1,7L

## FRYPAN 28CM



**BH-8152**

Ø28x5,2cm 2,4L

## PANCAKE PAN 25CM



**BH-8153**

Ø25x1,5cm

## FISH PAN



**BH-8173**

35x25cm

## FLIP FRYPAN 26CM



**BH-8156**

Ø26cm 2,8L

Brand new technologies from BerlingerHaus...



## SAVE YOUR TIME

Cleaning is a breeze. The easy-to-clean set has an improved non-stick exterior that makes cleaning easy.

## TITANPRO NON-STICK COATING



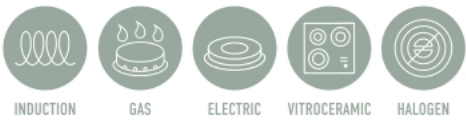
Top level, **3-times durable non-stick performance**. Even the simplest recipes get star treatment with our unique and stylish cookware.



## MAKE IT EASY

Introducing our innovative pouring spout design, making it easier than ever to pour oil or sauce with precision

# COOKWARES



**DEEP FRYPAN  
WITH 2 MOUTH 24 CM**



**BH-8157**  
Ø24\*6,5 cm 2,3L

**WOK 28 CM**



**BH-8158**  
Ø28\*7,4 cm 3,2L

**WOK  
WITH LID 28 CM**



**BH-8159**  
Ø28\*7,4 cm 3,2L

**GRILL PAN 28 CM**



**BH-8161**  
Ø28\*4,1 cm 2,1L

**GRILL PAN  
WITH LID 28 CM**



**BH-8162**  
Ø28\*4,1 cm 2,1L



HANGING HOLE

STAY-COOL ERGONOMIC  
SOFT-TOUCH HANDLE

3X DURABLE NON-STICK TITANPRO COATING

ECO FRIENDLY  
PFOA, LEAD, CADMIUM FREE



# COOKWARES

EVERY COOKWARE IS SUITABLE FOR  
**ALL COOKTOPS** INCLUDING INDUCTION

**SHALLOW POT  
WITH LID 28CM**



**BH-8163**  
Ø28x7,5cm 3,8L

**SHALLOW POT  
WITH LID 30CM**



**BH-8199**  
Ø30x7,5cm 3,8L

**WOK WITH LID 30CM**



**BH-8160**  
Ø30cm

**CASSEROLE WITH LID  
20CM**



**BH-8200**  
Ø20x10,4cm 2,5L

**CASSEROLE WITH LID  
24CM**



**BH-8201**  
Ø24x11,8cm 4,1L

**CASSEROLE WITH LID  
28CM**



**BH-8202**  
Ø28x12,4cm 6,1L

SILICONE LID RING WITH  
TEMPERED GLASS

STAY-COOL ERGONOMIC  
SOFT-TOUCH HANDLE

BUILT-IN  
POUR SPOUT

100% RECYCLABLE ALUMINIUM



3X DURABLE NON-STICK  
TITANPRO COATING

# COOKWARE SETS

## 3PCS FRYPAN SET



### BH-8206

Frypan Ø20x4,5cm 1L, Frypan Ø24x4,8cm 1,7L  
Frypan Ø28x5,2cm 2,4L

## 3PCS FRYPAN SET WITH GRILL PAN



### COMING SOON

Frypan Ø20x4,5cm 1L, Frypan Ø24x4,8cm 1,7L  
Grill pan Ø28x4,1cm 2,4L



## 10PCS COOKWARE SET



### BH-8207

Deep frypan Ø24x6,5 cm 2,3L, Frypan Ø20x4,5cm 1,0L  
Casserole with (strainer) lid Ø20x10,4 cm 2,5L  
Casserole with (strainer) lid Ø24x11,8 cm 4,1L  
Casserole with (strainer) lid Ø28x12,4 cm 6,1L  
2 pcs black bakelite mats

## 15PCS COOKWARE SET



### BH-8208

Deep frypan Ø24x6,5 cm 2,3L, Frypan Ø28x5,2cm 2,4L  
Casserole with (strainer) lid Ø20x10,4 cm 2,5L  
Casserole with (strainer) lid Ø24x11,8 cm 4,1L  
Casserole with (strainer) lid Ø28x12,4 cm 6,1L  
Sauce pan with lid Ø16x7,5 cm 1,2L  
3 pcs kitchen tools  
(slotted turner, spaghetti ladle, soup ladle)  
2 pcs black bakelite mats

*We are better together . . .*

15



# BAKEWARE

## OBLONG ROASTER



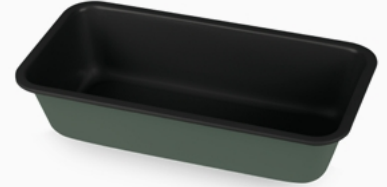
**BH-7902**  
Ø40x28cm

## OBLONG ROASTER



**BH-7906** / Ø40x28,5 cm  
**BH-7912** / Ø35x27 cm

## LOAF PAN



**BH-7918**  
Ø32x13,5x6,5cm

## SQUARE SPRINGFORM



**BH-8668**  
Ø28x28cm

## RECTANGLE SPRINGFORM



**BH-7942**  
Ø39x27x7,5cm

## ROUND SPRINGFORM



**BH-7936**  
Ø47x29cm

## PIZZA PAN



**BH-7930** / Ø32x1,1cm  
**BH-7924** / Ø36x1,1cm

## 12 CUPS MUFFIN PAN



**BH-7946**  
Ø42,3x29,8x3,5cm

3X DURABLE  
NON-STICK  
**TITANPRO**



IS THE LATEST AND THE  
MOST ADVANCED COATING  
TECHNOLOGY FROM  
**BERLINGERHAUS**

*Improve your baking experience with Us...*

### BUNDT PAN



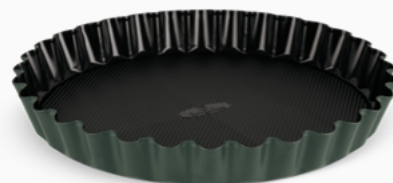
**BH-7997**  
Ø25x10cm

### OBLONG ROASTER WITH LID



**BH-8637**  
Ø40x28cm

### TART/CAKE FORM



**BH-8631**  
Ø35x25x4,5cm



Top Level  
**TitanPRO** Coating



5x Ultra  
Non-Stick



Harder **TitanPRO** Coating  
3x Durability



# COOKWARE

ROASTER WITH GLASS  
LID AND AROMA KNOB



OVEN SAFE

**BH-8775**

Ø32x21x10,6 cm

CASSEROLE  
24 CM



OVEN SAFE

**BH-6544**

Ø24x11 cm 4,35 L

OVAL ROASTER  
30 CM



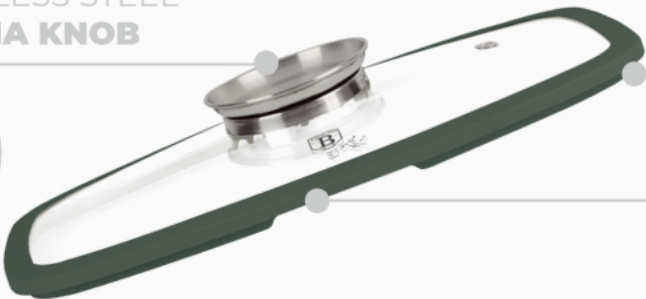
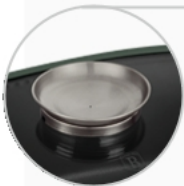
OVEN SAFE

**BH-6545**

Ø30x12 cm 4,65 L



STAINLESS STEEL  
AROMA KNOB



SILICONE LID RING WITH  
TEMPERED GLASS

BUILT-IN **POUR SPOUT**



3X DURABLE NON-STICK  
**TITANPRO COATING**



100% RECYCLABLE  
**CAST ALUMINIUM**

**BH-8779**

Ø32\*21\*10,6 cm, 6L



INDUCTION



GAS



ELECTRIC



VITROCERAMIC



HALOGEN



OVEN SAFE

# KNIVES

## 6PCS KNIFE SET INCLUDING ACACIA WOOD STAND



**BH-3124**

## 4PCS KNIFE SET



**BH-2975**

## CHEF KNIFE



**BH-2822**

## SANTOKU KNIFE



**BH-2823**

## BREAD KNIFE



**BH-2824**

## SLICER KNIFE



**BH-2925**

## UTILITY KNIFE



**BH-2926**

## PARING KNIFE




**BH-2927**



# KNIVES


**6PCS KNIFE SET**  
INCLUDING BAMBOO STAND



**BH-2751**

CHEF KNIFE  
BREAD KNIFE  
SANTOKU KNIFE  
UTILITY KNIFE  
PARING KNIFE  
BAMBOO STAND


**6PCS KNIFE SET**  
INCLUDING BAMBOO STAND



**BH-2757**

CHEF KNIFE  
BREAD KNIFE  
SANTOKU KNIFE  
UTILITY KNIFE  
PARING KNIFE  
BAMBOO STAND

**6PCS KNIFE SET**  
INCLUDING ACACIA WOOD  
MAGNETIC HANGER



**BH-2978**

CHEF KNIFE  
BREAD KNIFE  
SANTOKU KNIFE  
UTILITY KNIFE  
PARING KNIFE  
WOOD HANGER



*The greatness of cutting...*

**BH-3123**



ERGONOMIC  
**SOFT-TOUCH** HANDLE

FINGER GUARD

MIRROR POLISHED  
**STAINLESS STEEL**

**3CR13**  
HEAT TREATED BLADE

**DISHWASHER SAFE** (EASY TO CLEAN)

**1.**



**2.**



**3.**



**4.**



**5.**



**6.**



**7.**



**8.**



**1. CHEF KNIFE / 20CM**

**2. SANTOKU KNIFE / 17,5CM**

**3. BREAD KNIFE / 20CM**

**4. SLICER KNIFE / 20CM**

**5. UTILITY KNIFE / 20CM**

**6. STEAK KNIFE / 11,5CM**

**7. MINI SANTOKU KNIFE / 9CM**

**8. PARING KNIFE / 9CM**



Easy to Clean  
Dishwasher-safe



# ACCESSORIES

**SODA MAKER  
WITH 2 BOTTLES**



**BH-9785**

**5PCS KITCHEN  
TOOL SET**



**BH-6341**

**DISH RACK**



**BH-8826**

**KITCHEN ROLL  
HOLDER**



**BH-6839**

**BREAD BOX  
WITH 3PCS CANISTER**



**BH-8633**

**3 PCS GLASS  
FOOD CONTAINER SET**



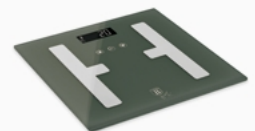
**BH-8791**

**DIGITAL GLASS  
KITCHEN SCALE**



**BH-9758**

**DIGITAL  
BATHROOM SCALE**



**BH-9759**

## SAVE THE WORLD

MAKE FRESH **SODA**  
with just a PRESS OF A BUTTON



**STANDARD SIZE CO2**



**0,5l**



**PRESSURE RELIEF BUTTON**

**AIR INLET BUTTON**

NON-ELECTRIC PUSH  
BUTTON DESIGN

**DOUBLE SAFETY  
PRESSURE RELEASE  
KEEPS PROCESS  
SAFE AND CLEAN**

**LEVEL 2 FOR SUPER LIGHT  
SODA**

**LEVEL 4 FOR LIGHT SODA**

**LEVEL 6 FOR A MIDDLE  
FIZZY SODA**

**LEVEL 8-10 FOR A STRONG  
FIZZY SODA**



# ELECTRIC



BH-9619

## KITCHEN SCALE WITH BOWL



EASY TO STORE

## How to use



**STEP 1**

PLACE THE EMPTY  
CONTAINER ON  
THE SCALE



**STEP 2**

PRESS ON/OFF ZERO  
SO THE DISPLAY  
SHOWS "0"



**STEP 3**

PLACE YOUR  
INGREDIENT  
IN THE CONTAINER



**STEP 4**

PLACE YOUR  
INGREDIENT  
IN THE CONTAINER

# ELECTRIC

## TOASTER



**COMING SOON**  
850W

## 2 SLICE TOASTER



**BH-9705**  
750W

## DIGITAL TOASTER



**BH-9665**  
870W

## ELECTRIC KETTLE WITH THERMOMETER



**COMING SOON**  
2200W / 1,7L

## 2 IN 1 ELECTRIC PEPPER AND SALT MILL



**BH-9649**  
CERAMIC GRINDER

## RICE COOKER



**COMING SOON**  
220-240V/1,8L

*We make your mornings magical...*



*For the perfect mornings . . .*

### TABLE BLENDER



**BH-9707**  
1000W / 1,5L

### DIGITAL ELECTRIC KETTLE



**BH-9746**  
2200W / 1,7L

### ELECTRIC CITRUS JUICER



**BH-9720**  
220-240V



*Whether it's breakfast, an Italian coffee or a tea party with friends,  
BerlingerHaus has it all.*

*We make your mornings magical...*



## DIGITAL ELECTRIC KETTLE DOUBLE WALL

### Thermal Insulation Function

This function keeps the water warm for 2 hours.

### 13 Levels Temperature Setting

You can adjust the boiling temperature from 40°C degrees, adding 5°C with each temperature levels.



Automatic  
Keep Warm



13 Levels  
Temperature Setting

40°C 45°C 50°C 55°C 60°C 65°C 70°C 75°C 80°C 85°C 90°C 95°C 100°C



Soak milk  
powder

...



Soak lemon  
water

...



Honey  
water



Brewing  
green tea



Make  
coffee



Boiling  
water



Color Touch  
Display Screen



1.7 L Large  
Capacity

### Large Color Touch Panel

Real time display of water temperature changes, one click control, simple and fast operation.

### 4 Pre-set Temperature

Soaking milk	...	40°C
Honey water	...	70°C
Green tea	...	80°C
Make coffee	...	90°C



# ELECTRIC

## Large Opening Design

Large opening for easy fill water and clean

## 1,7L Large Capacity

Satisfy the demand for 8 cups of water per day

## 2200W High Power

Fast heating, no need to wait long for boiling water

## Automatic Cover Open

Press the button to open the lid, effectively preventing burns

## Comfortable Handle

Take it easy and effortless

## 360° Rotary base

Wireless serving from any angle



ELECTRIC

KITCHEN  
MACHINES



**BH-9768**  
1500W



**BH-9708**  
1300W



POWERFUL MOTOR  
WITH FULL METAL  
GEAR INSIDE



**1300 W**



INCLUDING **3**  
TOOLS

**≤ 78DB** POWERFUL  
MOTOR WITH  
LESS NOISE



**BH-9708**



*Eat healthy be trendy*

**AIRFRYER 5L**  
WITH WINDOW



**BH-9709**  
1400W / **XL SIZE BASKET**

**AIRFRYER 8L**  
WITH WINDOW



**BH-9710**  
1650W / **XXXL SIZE BASKET**

**Guilt-free fried food**

Now there's a fast and easy way to cook your favorite meals and snacks.  
With the **BerlingerHaus** Air Fryer, you can enjoy crispy French fries  
and all your favorite foods without guilt.

**Cook with little to no oil.**

*Make your air-fried favorites with up to **75% less fat** than traditional  
frying methods.*

**US (FAMILY)**



**YOU & ME**



*Eat healthy be trendy*

**DRINKING BOTTLE**  
WITH LED TEMPERATURE  
DISPLAY



NON-SLIP  
BOTTOM

**BH-9679** 0,5L

**VACUUM FLASK**



NON-SLIP  
BOTTOM

**BH-8730** 1L

**VACUUM FLASK**



NON-SLIP  
BOTTOM

**BH-8725** 0,75L

**VACUUM FLASK**  
BOTTLE SHAPE



NON-SLIP  
BOTTOM

**BH-8748** 0,4L

**VACUUM FLASK**  
BOTTLE SHAPE



NON-SLIP  
BOTTOM

**BH-8734** 0,5L

**FLASK WITH BAMBOO**  
LID



NON-SLIP  
BOTTOM

**BH-7219** 0,6L



**INNOVATIVE FEATURES**

THE SMART WATER BOTTLE HAS A WATERPROOF LED DISPLAY. IT HAS LOW ENERGY CONSUMPTION AND WITHOUT A BATTERY CHANGE THE PRODUCT CAN BE USED FOR SEVERAL YEARS! THE DISPLAY SHOWS THE TEMPERATURE.

COPPER INNER PLATE WITH HEAT-RETENTIVE FEATURES HELPS MAINTAIN TEMPERATURE FOR A LONGER TIME

CUPHOLDER COMPATIBLE



8h



12h

**18PCS  
DINNERWARE SET**



**BH-10205**

**18PCS  
DINNERWARE SET**



**BH-10200**

**18PCS  
DINNERWARE SET**



**BH-10004**

**2PCS STAINLESS STEEL  
WINE GLASS SET**



**BH-8661**

**2 PCS STAINLESS STEEL  
CHAMPAGNE GLASS SET**



**BH-8665**

**NAPKIN HOLDER**



**BH-8825**



**BH-10205**



**BH-8665**

# SERVING

24 PCS CUTLERY SET



X6

BH-3037

24 PCS CUTLERY SET



X6

BH-3036

24 PCS CUTLERY SET



X6

BH-3035



## *We shine as table decorations*



### **24 PCS CUTLERY SET**

A nice cutlery set adds a little color to the monotonous life, when we have breakfast or dinner with our family, so much happiness is in our mind.



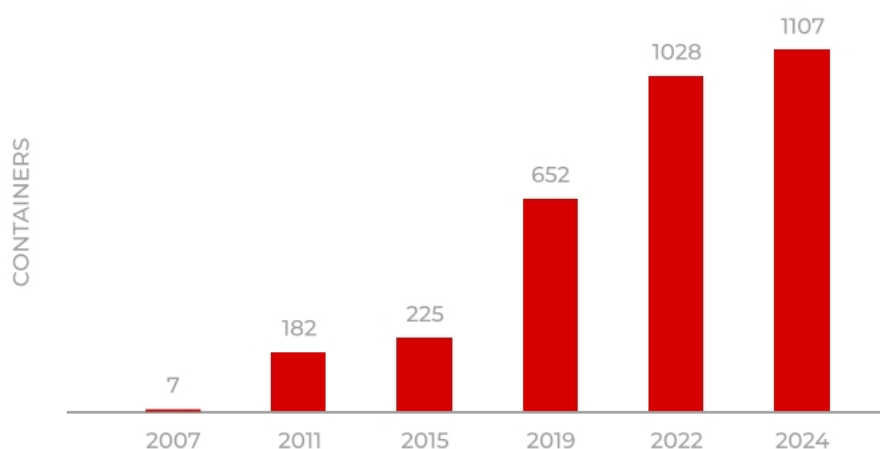
# WHO WE ARE

## HOME IMPEX LTD.



The first step of our group of companies started by operating as a small family business in a small garage store expanded in 2007 into a Hungarian legal entity called Home Impex Ltd (existing until today as so) and in 2013 into our Hong Kong company called Global House Supply Ltd.

SALES BY CONTAINER VOLUME GROWTH



We are a fast – growing producer of kitchen household products. Our products include categories such as Cook & Bakeware, Kitchen Accessories, Kitchen Tools, Home Electronics and Kitchen Knives. Due to our investment in building up strong purchasing departments (in Europe and in Hong Kong), together with expanding net of agents and distributors in 88 countries, we have managed to grow year to year from 2007.



We have a total SKU of over 3.000 different products (32 different collections) which are manufactured in our factories according to very strict EU and FDA regulations (especially the German LFGB regulation) and as a member of Amfori/BSCI we are committed to apply all the codes of conducts in relationship with our factories in order to achieve a common international goal of improving the working environment in our factories.

As part of the confirmation of the quality of our products and services that we provide to our customers, we decided to implement a quality management system and we are now the holder of the ISO 9001:2015 certificate. This successful audit confirms that we have successfully met the demanding requirements of the certification audit of the quality management system according to the ISO 9001:2015 system standard.

## Our Company in brief



High stock availability:  
we keep about  
**350** containers/day  
in Europe



Importing over  
**1107** containers/year



**20.000** m<sup>2</sup> warehouse  
in Hungary



Exporting to over  
**88** countries  
on all 5 continents



Nearly **110** direct  
employees



**3000+** Total SKU  
in **32** different  
collections



Nearly **400**  
strategic and active  
partners



Flexible payment  
conditions



Market price control



Strongly active  
in loyalty campaigns



**24** own registered  
handles, knobs  
and designs



**14** customer labels  
and customer brands  
(private labels)

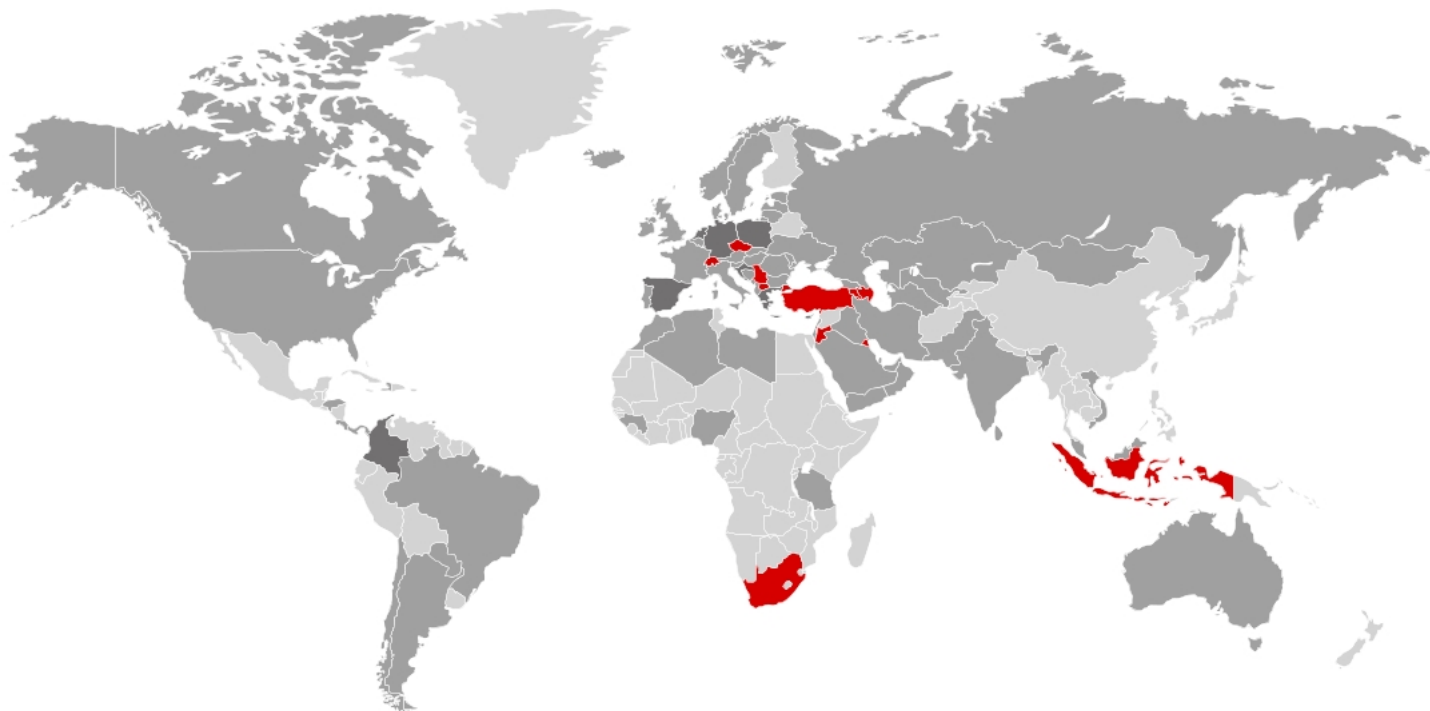


Marketing support  
to offline and online  
retailers

On 16.07.2021 Home Impex group has decided to be committed to energy efficiency and renewable energy. As a result of this decision the main company Home Impex Ltd. has initiated a tender in order to switch its entire energy system latest until middle of 2024 into a renewable energy enough to supply the entire energy consumption of its 20.000 m<sup>2</sup> warehouse, 4.500 m<sup>2</sup> office and showroom all around the world.



Due to the recognition that we are part of our society, therefore in the last 4 years we have invested back in our society. We are proud of our contribution to society through participating in charity events conducted by non-profit organizations in Hungary and other countries to help people in need, recognizing that an investment in our society is actually investment in ourselves.



■ Exclusive distributors:

- Armenia
- Azerbaijan
- Czech Republic
- Indonesia
- Jordan
- Kosovo
- Kuwait
- Serbia
- South Africa
- Switzerland
- Turkey
- Venezuela

■ Representative agents:

- Colombia
- Croatia
- Cyprus
- Germany
- Greece
- Netherlands
- Poland
- Spain

■ Non-exclusive distributors:

- |                      |            |              |               |                            |
|----------------------|------------|--------------|---------------|----------------------------|
| • Albania            | • Denmark  | • Italy      | • Norway      | • Sri Lanka                |
| • Algeria            | • Estonia  | • Kazakhstan | • Oman        | • Sweden                   |
| • Argentina          | • France   | • Latvia     | • Pakistan    | • Tansania                 |
| • Australia          | • Georgia  | • Lebanon    | • Palestine   | • Trinidad and Tobago      |
| • Austria            | • Guinea   | • Lithuania  | • Panama      | • Turkmenistan             |
| • Bahrain            | • Haiti    | • Lybia      | • Paraguay    | • Ukraine                  |
| • Barbados           | • Honduras | • Macedonia  | • Portugal    | • United Arab Emirates     |
| • Belgium            | • Hungary  | • Malaysia   | • Qatar       | • United Kingdom           |
| • Bosnia Herzegovina | • Iceland  | • Malta      | • Romania     | • United States of America |
| • Brasil             | • India    | • Moldova    | • Russia      | • Usbekistan               |
| • Bulgaria           | • Iran     | • Mongolia   | • Saint Lucia | • Vietnam                  |
| • Canada             | • Iraq     | • Montenegro | • Saud Arabia | • Yemen                    |
| • Chile              | • Ireland  | • Morocco    | • Slovakia    |                            |
| • Costa Rica         | • Israel   | • Nigeria    | • Slovenia    |                            |

# MAIN PARTNERS

THANK YOU  
FOR CHOOSING US!



VISIT OUR  
YOUTUBE  
CHANNEL



[WWW.YOUTUBE.COM/BERLINGERHAUS](http://WWW.YOUTUBE.COM/BERLINGERHAUS)



**Home Impex Ltd.**

**Contact Us**

Hungary, 2120 Dunakeszi, Pallag str. 30. | +36-1/377-8667  
[info@berlingerhaus.com](mailto:info@berlingerhaus.com)

©Copyright 2015 BerlingerHaus | All Rights Reserved

